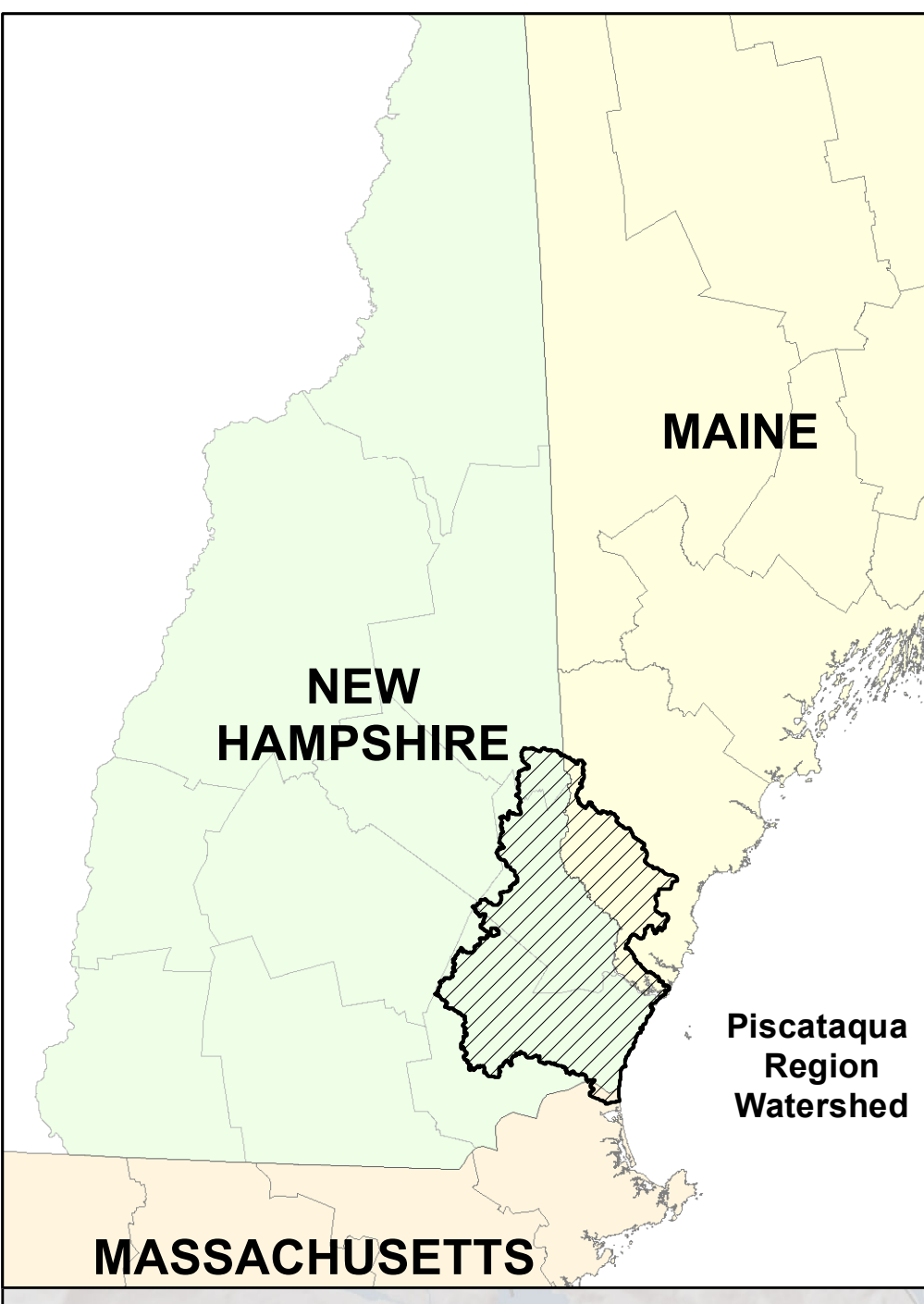
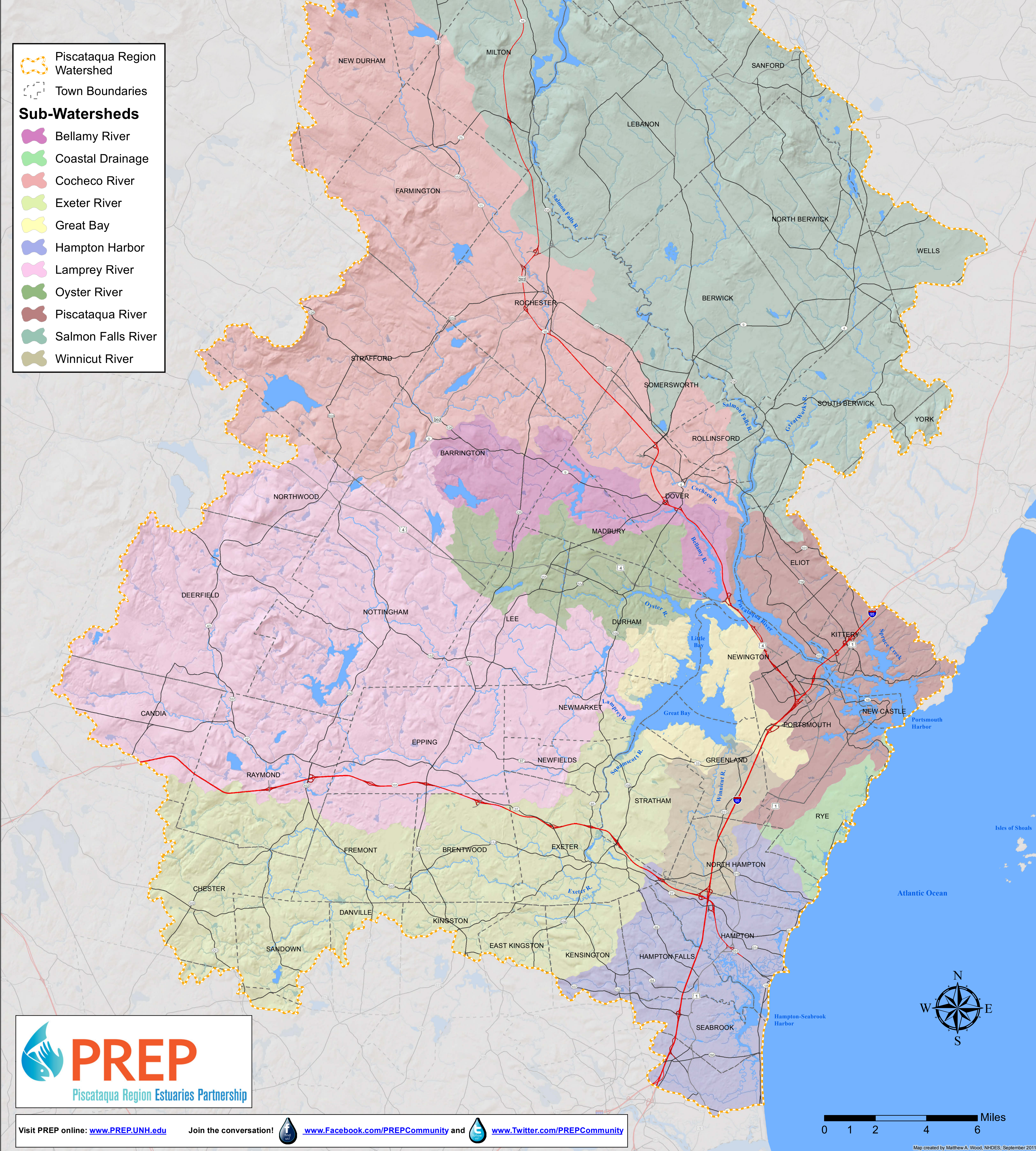


# Piscataqua Region Watershed

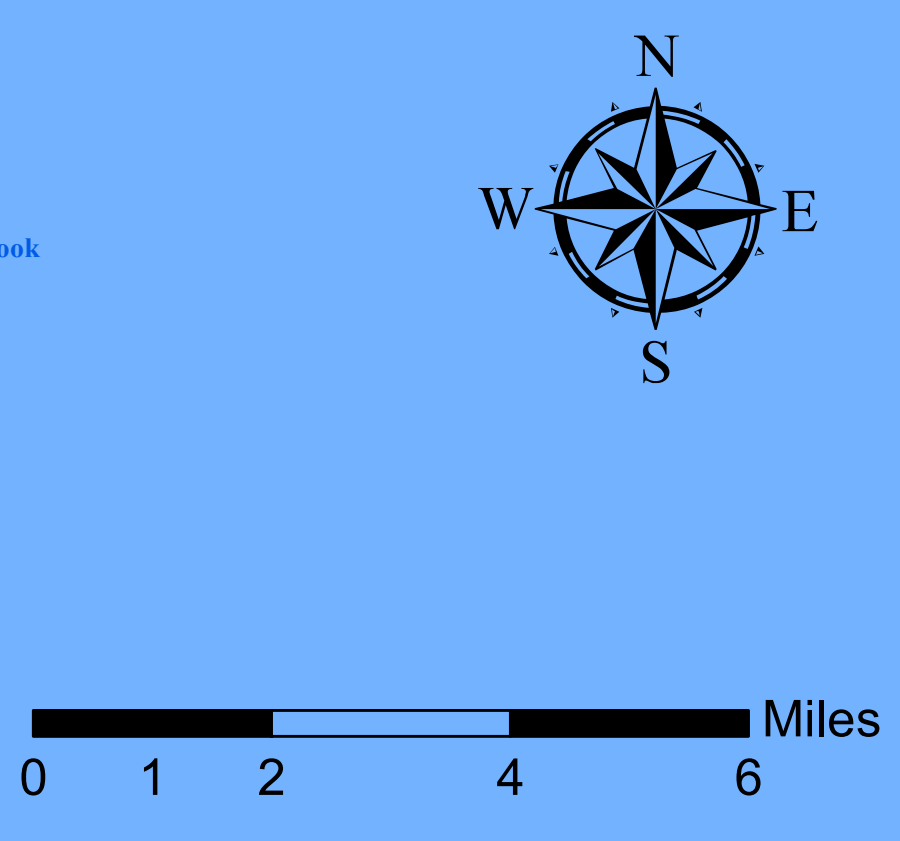
The Piscataqua Region Watershed is the land area from which water drains to the Great Bay Estuary and the Hampton-Seabrook Estuary. The watershed covers 1086 square miles in New Hampshire, Maine and Massachusetts.



- Piscataqua Region Watershed
- Town Boundaries
- Sub-Watersheds**
- Bellamy River
- Coastal Drainage
- Cochecho River
- Exeter River
- Great Bay
- Hampton Harbor
- Lamprey River
- Oyster River
- Piscataqua River
- Salmon Falls River
- Winnicut River



Visit PREP online: [www.PREP.UNH.edu](http://www.PREP.UNH.edu) Join the conversation! [www.facebook.com/PREPCommunity](https://www.facebook.com/PREPCommunity) and [www.twitter.com/PREPCommunity](https://www.twitter.com/PREPCommunity)



Map created by Matthew A. Wood, NHDES, September 2011