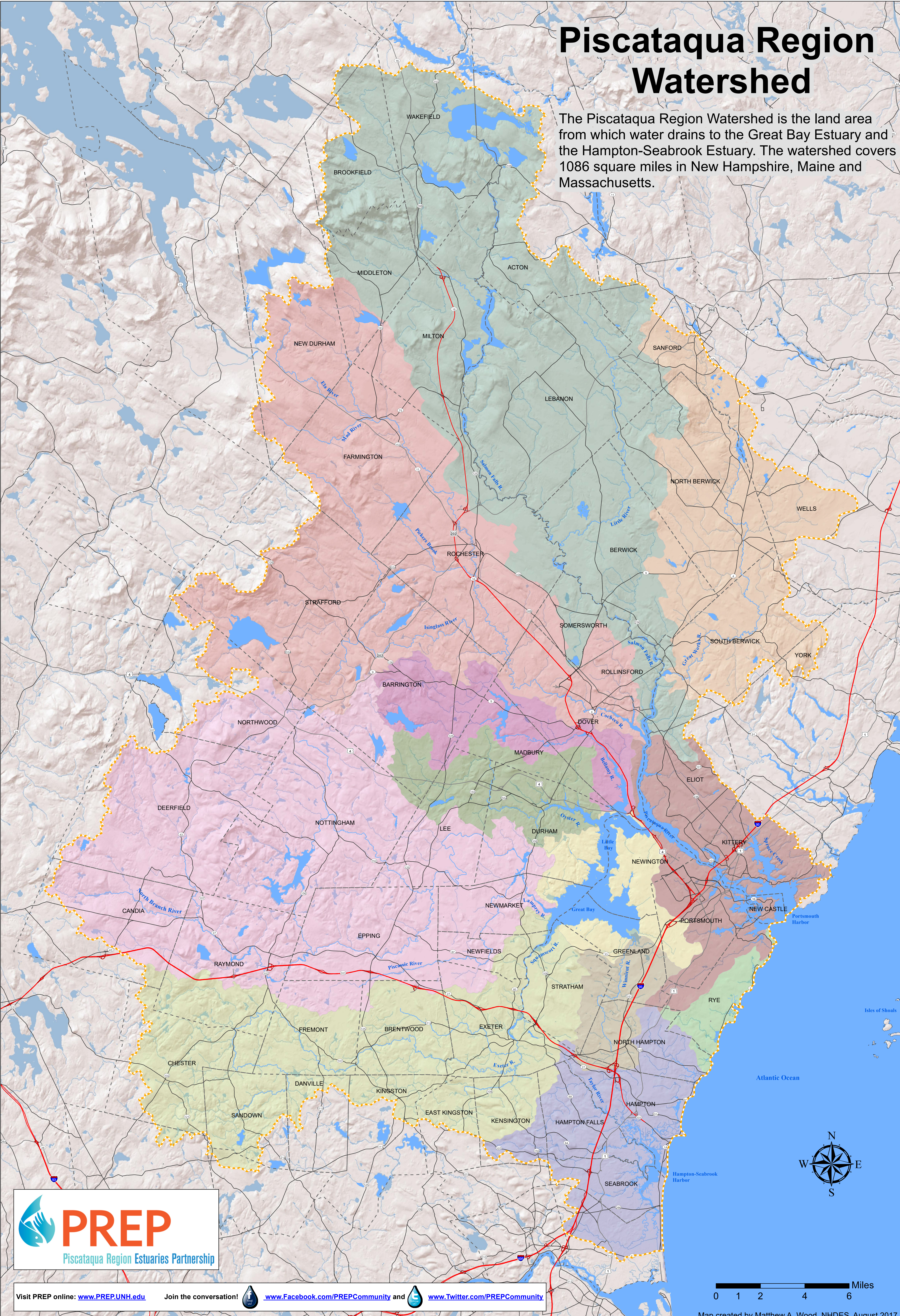


Piscataqua Region Watershed

The Piscataqua Region Watershed is the land area from which water drains to the Great Bay Estuary and the Hampton-Seabrook Estuary. The watershed covers 1086 square miles in New Hampshire, Maine and Massachusetts.



Visit PREP online: www.PREPUNH.edu Join the conversation! www.facebook.com/PREPCommunity and [www.twitter.com/PREPCommunity](https://twitter.com/PREPCommunity)

0 1 2 4 6 Miles
Map created by Matthew A. Wood, NHDES, August 2017